

THE
BURLINGTON
MAGAZINE



Young Michelangelo: a newly discovered drawing

**A set of furniture for the Duke of Urbino | Frans Snijders's early still lifes | The Giovanni Bellini debates
Madame de Pompadour's Sèvres | Boilly in Paris | Josef Hoffmann in Vienna | Georgia O'Keeffe's photographs**

MASTERPIECE

LONDON 30 JUNE TO 6 JULY 2022

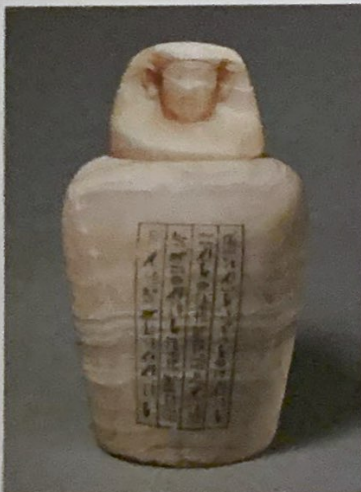
South Grounds, The Royal Hospital Chelsea, London SW3
www.masterpiecefair.com



Skull of a *Triceratops prorsus*. Late Cretaceous period. Fossil, 170 by 115 by 150 cm. **DAVID AARON, LONDON**



Diamond cut egg, by David Nash (b.1945). 2020. Maple, 71 by 30 by 30 cm. **ANNELY JUDA FINE ART, LONDON**



Egyptian canopic jar for Hena. Late Dynastic Period, c.664-525 BC. Alabaster, height 32.5 cm. **GALERIE MALAQUAIS, PARIS**

THIS MONTH WE WELCOME the eleventh edition of Masterpiece London, the high point of the London summer fair season and the meeting place of many of the world's most distinguished art dealerships. The event will attract collectors, interior designers and art enthusiasts to the elegant grounds of the Royal Hospital, Chelsea.

The exhibitors span all eras from the ancient world to the modern and contemporary periods. Visitors can expect to see the finest works of fine and decorative art, including sculpture, silverware, furniture, cultural artefacts and jewellery. Masterpiece London operates with a strict ethical code and allows only dealerships with a fine reputation to exhibit. All works will be examined by a vetting committee of experts to check for authenticity and quality.

Particular highlights include a George I walnut cabinet, an important addition to the known corpus of early 18th-century English walnut furniture; an extraordinarily complete skull of a mature *Triceratops prorsus* from the Late Cretaceous period; Augustus John's marvellous double portrait of two Jamaican sisters produced during his trip to Jamaica; and a compelling likeness of Georges de Porto-Riche by Jacques-Émil Blanche, presented as a gift to his fellow artist Auguste Rodin.

This year's 'Masterpiece Presents' will occupy a large exhibition space at the fair's entrance dedicated to innovative and immersive art. It will feature two monumental light installations by Pakistani-American artist Anila Agha, represented by Sundaram Tagore Gallery. The artist is known for her award-winning, transformative light installations, and has been the subject of three solo museum shows in the past year.

For more information visit www.masterpiecefair.com



Island of the Lights from *Pinoch* by Paula Rego (b.1935). 1996. Pencil, ink and watercolour on paper, 100 by 180 cm. **PIANO NOBILE, LONDON**